

LISTENING → ACTION

FOR SOUTH CENTRAL KANSAS

*“When rural Kansas succeeds,
the state as a whole succeeds.”*

-Lt.Governor Lynn Rogers



2020 Virtual Listening Tour
September 2, 2020
5:30-7:00 p.m.

RuralKanProsper.KS.gov

@LTGOVROGERS
#ORPTour2020

LISTENING → ACTION

Agenda

- ORP Overview, Lt. Governor Lynn Rogers
- Childcare and Early Education, Melissa Rooker
- Housing, Ryan Vincent
- Community Development, Kayla Savage
- ORP Policy Priorities, Joshua McGinn
- Looking Forward, Lt. Governor Lynn Rogers
- Closing, Jillian Fisher



LISTENING → ACTION



LISTENING → ACTION

#LynnListens

Join us as Lt. Gov. Lynn Rogers visits your town to discuss plans for rural prosperity in Kansas. He wants to hear what you have to say!



Listening Tour Schedule

Nickerson - June 17th	Winfield - July 8th	Concordia - August 1st
Atchison - June 20th	Lindsborg - July 10th	Sabetha - August 5th
Colby - June 24th	Garnett - July 22nd	Dodge City - August 7th
Phillipsburg - June 25th	Independence - July 23rd	
	Ulysses - July 30th	

ruralkanprosper.ks.gov

2019

RURAL PROSPERITY LISTENING TOUR

OFFICE OF RURAL PROSPERITY



LISTENING → ACTION



LISTENING → ACTION

Expanding Capacity

- ORP Staff
 - Jillian Fisher, Deputy Director
 - Joshua McGinn, Policy Analyst
- Community Development Division
 - The Community Development Block Grant Program (CDBG)
 - The Community Service Tax Credit Program (CSP)
 - The Kansas Main Street Program
 - The Office of Broadband Development



LISTENING → ACTION

Interagency Work Groups & Policy Priorities

- Looking at things from a Rural angle
- Three “Rs”: Research, Resources, and Recommendations
- Childcare
- Housing
- Broadband
- Rural healthcare
- Additional Infrastructure



LISTENING → ACTION





All In For
Kansas Kids



August 2020

Early Childhood Care and Education – 6,000 Voices

Central Messages:

- The experiences of families with young children in Kansas are **shaped by where they live**, both across the regions of the state and within their communities.
- Young children are growing up in families where **basic needs are not being met**.

Key Findings:

Accessibility



Availability



Navigation



Collaboration



Workforce



Facilities



Systems Alignment



Bright Spots



Needs Assessment

All In For
Kansas Kids



All In For Kansas Kids Strategic Plan

➤ Our Vision: *Every Child Thrives*

➤ Goals, Strategies, Tactics, and Indicators of Success:

- State Level Coordination
- Community Level Coordination
- Family Knowledge and Choice
- Private Sector Collaboration
- Capacity and Access
- Workforce
- Quality and Environments



State: State agencies



Local: Individuals or small group champions



Partner: Statewide and/or community-level organizations, businesses, school systems, and philanthropy



Policy: Elected officials

Strategic Plan

All In For 
Kansas Kids

Our Tomorrows – Stories from Kansans

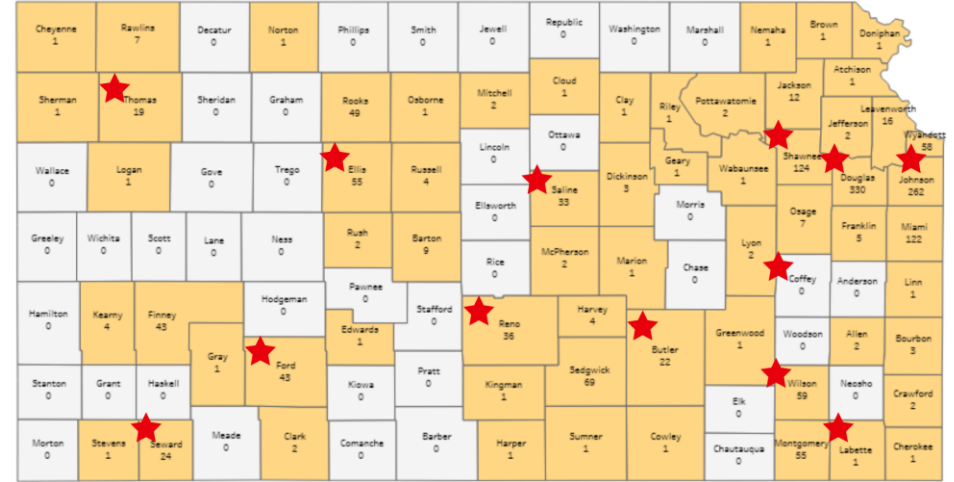
Rural Kansans Experience

- Acceptance, hesitance, confusion, and frustration in response to COVID-19
- COVID-19 Impact on employment, healthcare, technology, financial struggles

Understand Impact

- Stories offer deeper context for understanding the real impact on families
- Perspectives in the words of Kansans
- Informs our decision-making

<https://ourtomorro.ws/ORP>



(Map updated on 08/19/2020)

We asked for input, **we heard** your stories, and we are responding!

Rural Voices

All In For
Kansas Kids

Response to COVID-19

➤ Listening

- Bi-weekly webinars, fielded questions and concerns.
- Share form for questions/concerns on Children's Cabinet webpage.
- Our Tomorrows Stories and Scans

➤ Resources

- Child Care Action Labs – mini grants
- Hero Relief Program – Dept. of Children & Families
- KCCTF Website and weekly email updates

**Early Childhood Care
and Education**

**All In For
Kansas Kids** 

Response to COVID-19

➤ CARES Act – County-Level Support

➤ CARES Act – State-Level Support

- Early Childhood Consultant Network – help early childhood services and providers respond to the COVID-19 crisis.
- Early Childhood Workforce Health Fund – help uninsured early childhood workers with medical expenses directly attributable to COVID-19.
- Technologies for Families Fund – provide access to equipment and devices to support virtual access for families served by early childhood care and education providers.

**Early Childhood Care
and Education**

All In For 
Kansas Kids

Strategic Plan – Next Steps

➤ **Preschool Development Birth – Five Renewal Grant**

- Three year renewal \$8.9 million per year
- Will build on Needs Assessment & Strategic Plan

➤ **Infrastructure Solutions:**

- Workforce (Goal 6) - Recruitment and retention, training and professional development, and a workforce registry to support career advancement.
- Common Application(Goal 1) - Streamline process with a single application to apply for multiple funding opportunities.
- Community Subgrants (Goal 5) - Fund community-generated solutions to equip and connect providers and community-based services in ways that make getting access to care easier for children and families.

**Early Childhood Care
and Education**

**All In For
Kansas Kids** 

QUESTIONS and ANSWERS

Connect with your county CARES Act efforts –
#EarlyChildhoodIsEssential

Share your thoughts: www.kschildrenscabinet.org/share

Share your story: <https://ourtomorro.ws/ORP>

Melissa Rooker - mrooker@ksde.org, Executive Director
Kansas Children's Cabinet and Trust Fund

Stay Connected

All In For 
Kansas Kids



Unlocking Home

Ryan Vincent
Executive Director



Kansas Housing: Overview

Who we are: A self-supporting, nonprofit public corporation, Kansas Housing Resources Corporation (KHRC) administers housing and community programs across Kansas.

What we do: We help Kansans access the safe, affordable housing they need and the dignity they deserve.

Who we work with: Local government officials, mortgage lenders, business leaders, developers, builders, property managers, real estate professionals, service providers, homeless / affordable housing advocates, nonprofit organizations, government agencies.



Our Programs

EMERGENCY HOUSING

- + Emergency Solutions Grant

COMMUNITY SOLUTIONS

- + Community Services Block Grant
- + Tenant Based Rental Assistance

HOUSING DEVELOPMENT

- + Low Income Housing Tax Credit
- + HOME
- + Moderate Income Housing
- + National Housing Trust Fund

HOMEOWNERSHIP

- + First Time Homebuyer Program
- + Manufactured Housing

ENERGY EFFICIENCY

- + Weatherization Assistance

COMPLIANCE

- + Contract Administration
- + Housing Compliance



Community Solutions

- The [Emergency Solutions Grant \(ESG\)](#), through a network of service providers, offers assistance to those who are experiencing homelessness or at risk of becoming homeless.
- The [Community Services Block Grant \(CSBG\)](#) is an anti-poverty program that serves low-income Kansans through eight local entities funded by KHRC.
- [TBRA](#) helps income-eligible households with rent and security and/or utility deposit payments. Assistance is distributed via a statewide network of grantees.
- The [Weatherization Assistance Program](#) provides free upgrades for qualifying households to improve energy efficiency and lower utility bills.



Housing Development

- **Financed through various programs:**
 - [Low Income Housing Tax Credits](#)
 - [HOME Rental Development](#)
 - [National Housing Trust Fund](#)
- **153** housing properties throughout South Central Kansas have been developed with LIHTC, HOME, and/or NHTF funding.
- 2021 draft [Qualified Allocation Plan](#), which guides how tax credits are awarded, will give additional points to **Rice, Stafford, Pratt, Barber, Harper, and Sumner counties** to encourage development in these areas.



Housing Development



Sunflower Gardens III: 28-unit new construction senior development in Wichita. Placed in service June 2018, financed via HOME, NHTF.

Housing Development



The Link I and II: 29-unit new construction development in Hutchinson for seniors and people with disabilities, placed in service January 2019.

Housing Development

Interfaith Townhomes II: 24-unit new construction senior development in Hutchinson. 2021 tax credit reservation, also uses HOME funds.

Commerce Gardens II: 48-unit new construction family project in Hutchinson, 2021 tax credit reservation.

Flint Creek: 32-unit new construction family development in El Dorado, 2021 tax credit reservation.

Residences at Central Landing: 32-unit new construction senior project in Wichita, 2021 tax credit reservation, also includes NHTF.



Moderate Income Housing

The [Moderate Income Housing program](#) serves the needs of moderate-income households that don't qualify for federal housing assistance. MIH grants and/or loans are awarded to cities and counties to develop multi-family rental units and single-family for-purchase homes in communities with populations fewer than 60,000 people. This funding is allocated by the state legislature.



MIH Projects/Developments



Newton: Gap financing for 44 rental apartments at Cottonwood Crossing Multi Family Housing Complex, including 10 MIH units. The project consisted of two 16- unit buildings and 6 duplex buildings. The project was completed in August 2016. As of September 2019, 14 units are filled with MIH households.



MIH Projects/Developments

Stafford County: Homebuyer assistance for four newly constructed single-family homes in St. John. Stafford partnered with Kansas State University's Department of Architecture students. Students provided the project design as a source of in-kind labor. Awarded in 2016.



Compliance & Homeownership

The [First Time Homebuyer Program](#) helps income-eligible households purchase their first home by providing down payment assistance. The program allows qualifying homebuyers to apply for a 0% interest loan in the amount of 15% or 20% of the purchase price of the home. The loan is forgiven if the buyer remains in the home for 10 years!

- **55** South Central Kansas closings between 2017-19

Compliance conducted by KHRC's Contract Administration and Housing Compliance Divisions

- **201** properties monitored in South Central Kansas



Resources and Action Steps

South Central Kansas service providers:

- [Mental Health Association of SC KS](#): Megan Bruce, 316.685.1821
- Harvey County DV/SA Task Force: Jan Jones, 316.284.6922
- [Butler Homeless Initiative](#): Debbie Hill, 316.323.4122
- [Family Life Center](#): Darla Carter, 316.321.7104
- [Harvest America](#): Terri Bookless, 913.342.2121
- [BrightHouse](#): Donna Davis, 620.665.3630
- [McPherson Housing Coalition](#): Jean Ballew, 620.241.7828 ext. 17
- [ECKAN](#)
- [WSCCAP](#)

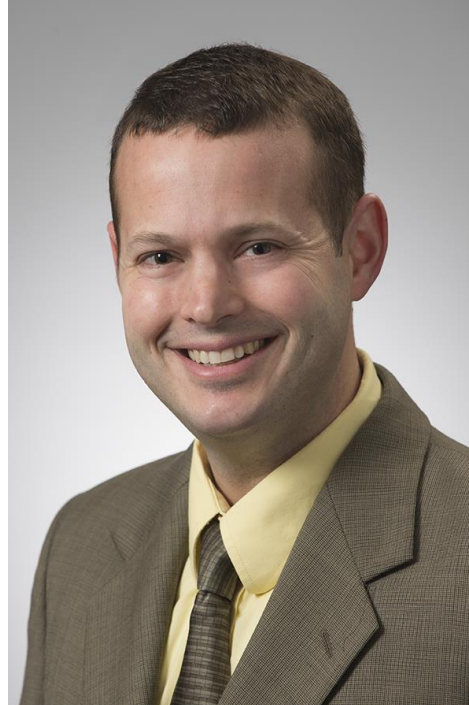
Moderate Income Housing:

- Applications due **September 28, 2020**
- Contact: Alissa Ice, aice@kshousingcorp.org

- Watch our [Current Announcements page](#) or [subscribe](#) to our email list for updates.



Questions?



Ryan Vincent

Executive Director

rvincent@kshousingcorp.org

www.kshousingcorp.org



COMMUNITY DEVELOPMENT DIVISION



Community Development Division

- Kansas Main Street
- Community Service Tax Credit Program
- Community Development Block Grant (CDBG)
- Kansas Creative Arts Industries Commission
- Office of Broadband Development
- Rural Opportunity Zones
- Individual Development Accounts
- Community Development Regional Project Managers



KANSAS MAIN STREET

- Kansas Main Street is back!
- 25 active designated Main Streets cities throughout the state
- New city application opens this fall



Community Development Block Grants (CDBG)

Established to help Kansas communities (50K or fewer residents) **enhance their livability** by providing financial, technical and business assistance using HUD funding.

Grants are awarded in five categories:

1. Water/Sewer Grants (competition)
2. Community Facilities Grants (competition)
3. Housing Grants (competition)
4. Urgent Need Grants (e.g. disaster response)
5. Commercial Rehabilitation Grants
6. Economic Development (business finance)

To qualify, projects must meet one or more of the following condition:

- Benefit low- or moderate-income individuals
- Remove or prevent slum or blight conditions
- Eliminate an urgent need created by a disaster when local funds are unavailable

▶ CDBG PROGRAM SUMMARY

39 awards totaling \$17.4M made in FY20 across the State

- Awards were made in three different categories:
 - Water/Sewer
 - Community Facilities
 - Housing

7 awards totaling \$3,032,860 made in FY20 in South Central Kansas

CDBG PROJECTS FROM SOUTH CENTRAL

Cowley County, Cambridge -- \$182,000 awarded for water system improvements.

Cowley County, Udall -- \$494,360 awarded for the completion of a Library and Wellness Center.

Marion County, Marion -- \$600,000 awarded for water distribution improvements.

McPherson County, McPherson - \$300,000 awarded to rehabilitate approximately 13 homes for low-to moderate income families.

Reno County, Arlington - \$600,000 awarded for wastewater improvements.

Reno County, Hutchinson - \$256,500 awarded for the rehabilitation of approximately ten homes for low-to-moderate income families.

Sumner County, Conway Springs - \$600,000 awarded for wastewater improvements for the city.



Community Service Tax Credit Program (CSP)

Improves the ability of non-profits to undertake **major capital fundraising drives** for community projects (e.g. community service, crime prevention, health care, youth, apprenticeships and youth job creation)

- Applicants may request up to \$250,000 in tax credits to contributors of approved projects
- Organizations in rural areas (less than 15,000 in population) are eligible for a 70% credit
- Organizations in non-rural areas are eligible for a 50% credit

CSP SOUTH CENTRAL AWARDEE HIGHLIGHTS

Pratt Community College Foundation – Pratt, Pratt County

Construction of a multipurpose track and field facility for community health, school district and college competition and youth activities.

Mercy Hospital Inc. -- Moundridge , McPherson

Entrance improvements to the hospital to ensure all patrons can access the main entrance.

Central Kansas Community Foundation – Newton, Harvey County

Building new study rooms for youth and adults to utilize; a large community room that can be divided into two spaces for community meeting and gathering spaces; and a Maker Room. The Maker Room will provide technologies and additional tools to increase skills that patrons otherwise may not have access to.

St. Luke Hospital Foundation – Marion, Marion County

Purchase of 3-D mammography technology

CSP SOUTH CENTRAL AWARDEE HIGHLIGHTS (cont.)

Youth Horizons, Inc. – Wichita, Sedgwick County

New multi-residential housing for at-risk girls and young women.

The Kansas African American Museum (TKAAM) – Wichita, Sedgwick County

Building an environmentally controlled vault that is designed to preserve the historical items in their collection and any new donations they may receive.

Buhler Sunshine Home, Inc Assisted Living Memory Care Center – Buhler, Reno County

The construction of a 13-unit Memory Care Center designated specifically for individuals affected by Alzheimer's disease or related dementias.

Exploration Place, Inc. – Wichita, Sedgwick County

The purchase and installation of a new exhibit that children and their families can explore the human body in ways that create excitement and wonder. Health education and disease prevention are at the forefront of this exhibit, but delivered in a disguise of three-dimensional body parts, nostalgic, carnival-like games and STEAM activities

CSP SOUTH CENTRAL AWARDEE HIGHLIGHTS (cont.)

Hunter Health Clinic – Wichita, Sedgwick County

Construction of a Community Wellness Center that create a space where Hunter Health and community partners can collaborate to provide access to services, programs and education to help improve factors that impact health. In addition to that a drop-in childcare center to address one of the greatest barriers faced by patients when accessing care.

Wichita Family Crisis Center – Wichita, Sedgwick

Renovating each of the eight shelter rooms which house between four to ten victims at a time. Renovating bathrooms and kitchens. Also updating the security system to ensure safety of patrons.

Legacy, A Regional Community Foundation – Winfield, Cowley County & Belle Plaine, Sumner County

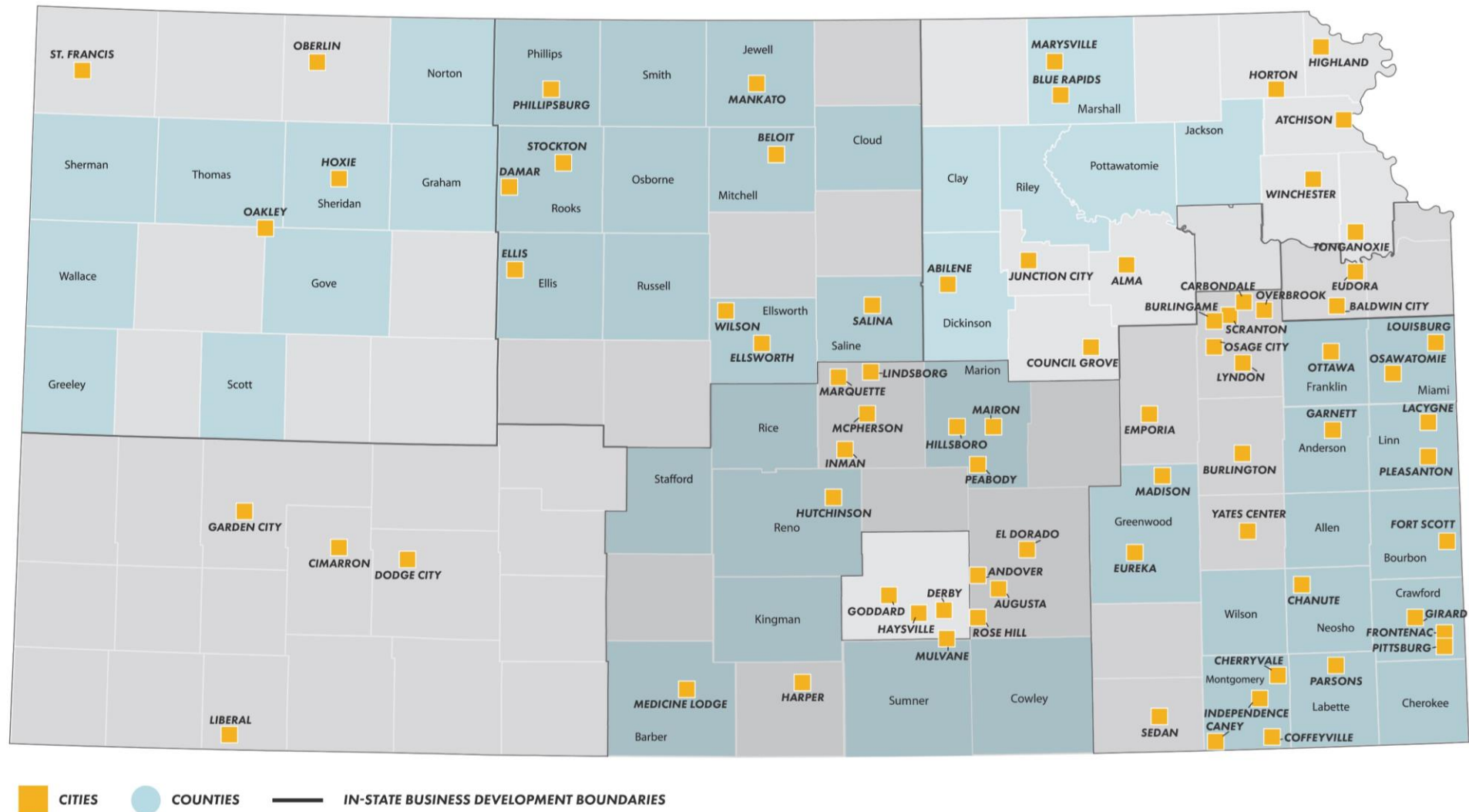
Making Belle Plaine a Quiet Zone to ensure that the daily interruptions every 5-10 do not hinder outdoor events.



CDBG COVID Response

- \$16.9M awarded in two phases, first come first serve basis
- Funds awarded to cities and counties throughout Kansas
- Small business grants to be used for working capital expenses
- Meal program grants to support food pantries and community meal programs for children and families
- Decisions made on the local level to go where needed most

CDBG-CV Award Grantees



THANK YOU

Kayla Savage

Director

kayla.savage@ks.gov

www.KansasCommerce.gov

LISTENING → ACTION



ORP's Policy Priorities

- Childcare
- Housing
- Workforce
- Rural Healthcare
- Infrastructure
- Broadband

LISTENING → ACTION

Workforce

- The SPARK Task Force has approved \$8.1 million in funding to address Kansas's workforce needs:
 - Training/retraining in growing fields, including IT certifications, cybersecurity
 - Technical college instructional equipment to support automation/advanced manufacturing
 - KANSASWORKS jobseeker support



LISTENING → ACTION



Rural Healthcare

Medicaid Expansion:

- With MO & OK approving Medicaid Expansion, KS is 1 of only 12 states to refuse Federal funding.
- Estimates are that more than 150,000 Kansans do not have health insurance during the pandemic.
- We must address this healthcare issue for Kansans and rural Kansas hospitals.

Other Issue ORP is Paying Attention to:

- Primary Health Centers & different payment models.
- Ensuring adequate medical providers in rural areas.
- Building on the progress we've made with telemedicine.

LISTENING → ACTION

Infrastructure

Eisenhower Legacy Transportation Program (IKE):

- Rolling Program
- Focused on practical projects
- Partnership programs such as Cost Share and Local Bridges.
- Includes funding for broadband improvements and other enhancements.

Other programs:

- Multi-modal transportation with public transit
- Aviation
- Short-line rail
- Bike/pedestrian programs



LISTENING → ACTION

Cost Share & Bridge Awards South-Central

BRIDGES

Butler County
Reno County
Rice County
Sedgwick County
Stafford County

COST SHARE

Marion County (x2)
Butler County
Harvey County
Kingman County (x2)
Rice County
Sedgwick County (x3)



LISTENING → ACTION

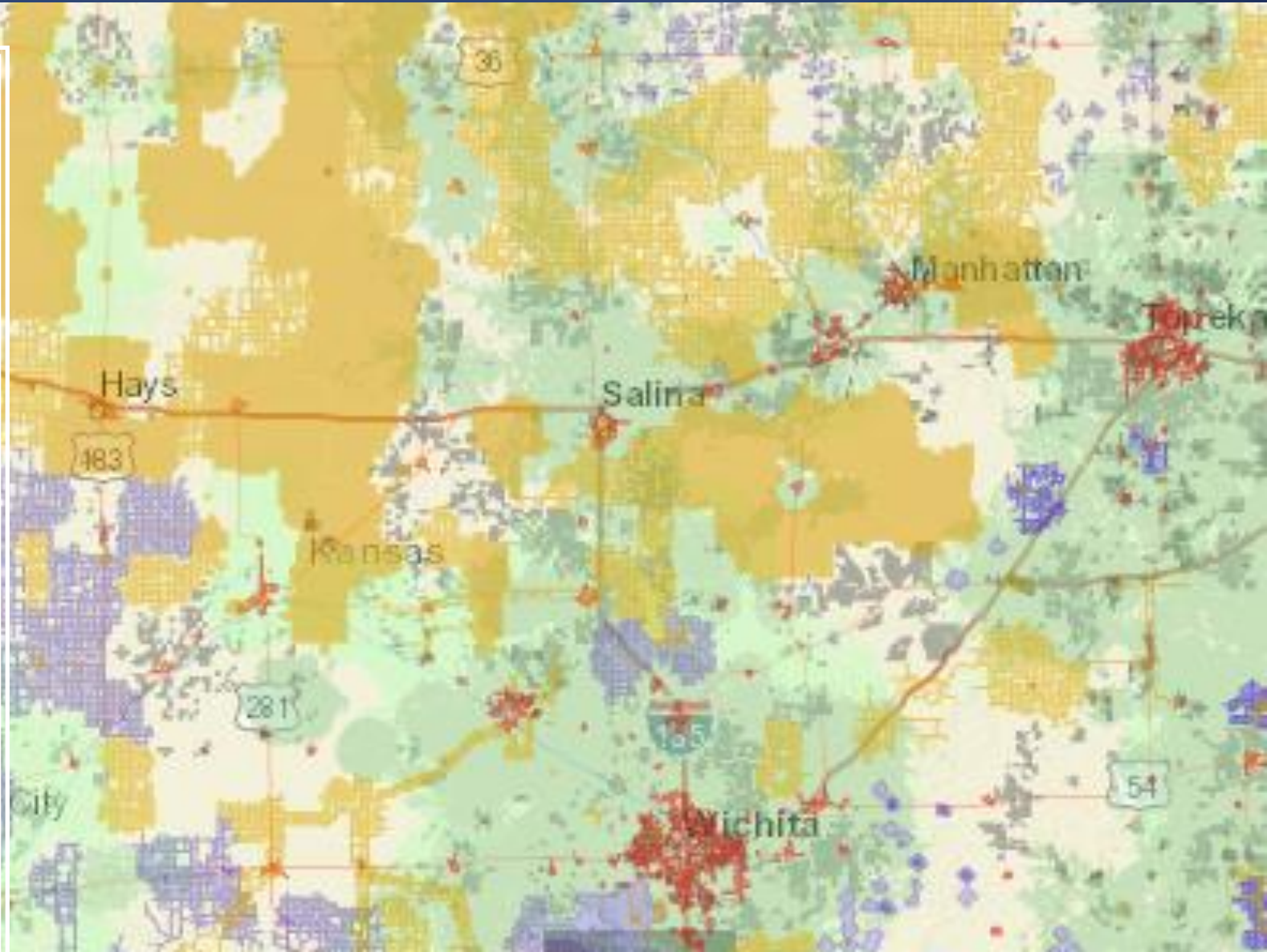
Broadband Grant Program

2018: Broadband Task Force

2019: Broadband Map Produced

2020: First Grant Programs Begin

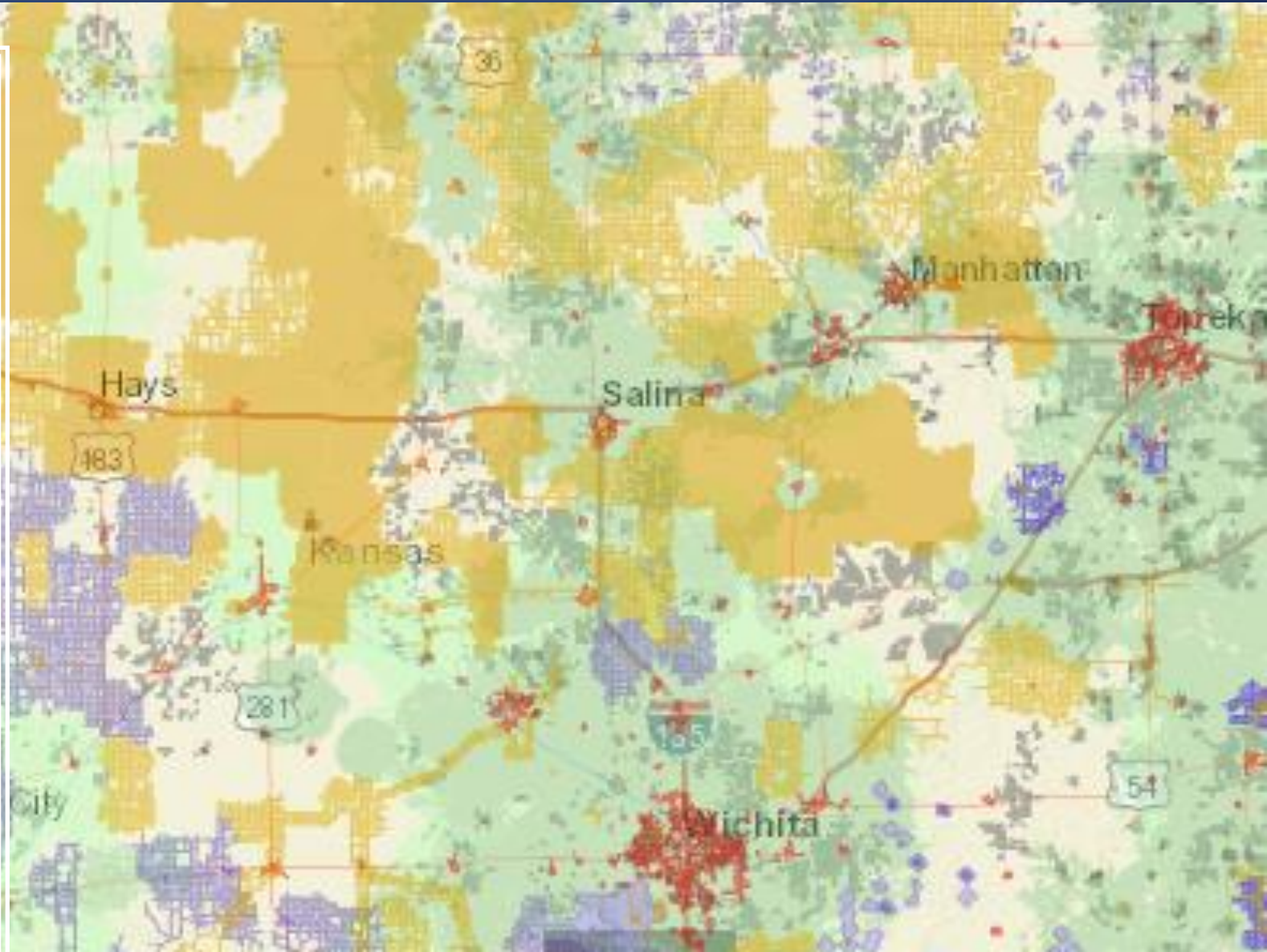
- January
 - Task Force Recommendations released
 - Governor includes first grant program in IKE
- March
 - Legislature approves & Governor signs legislation
 - IKE and grant program become law



LISTENING → ACTION

Broadband Grant Program

- Needs to demonstrate need & community support.
- Open to any public, private, non-profit partnership.
- Technology neutral but must be scalable to higher speeds.
- Ability to demonstrate impact.
- Includes matching requirement.



LISTENING → ACTION

Broadband & COVID-19

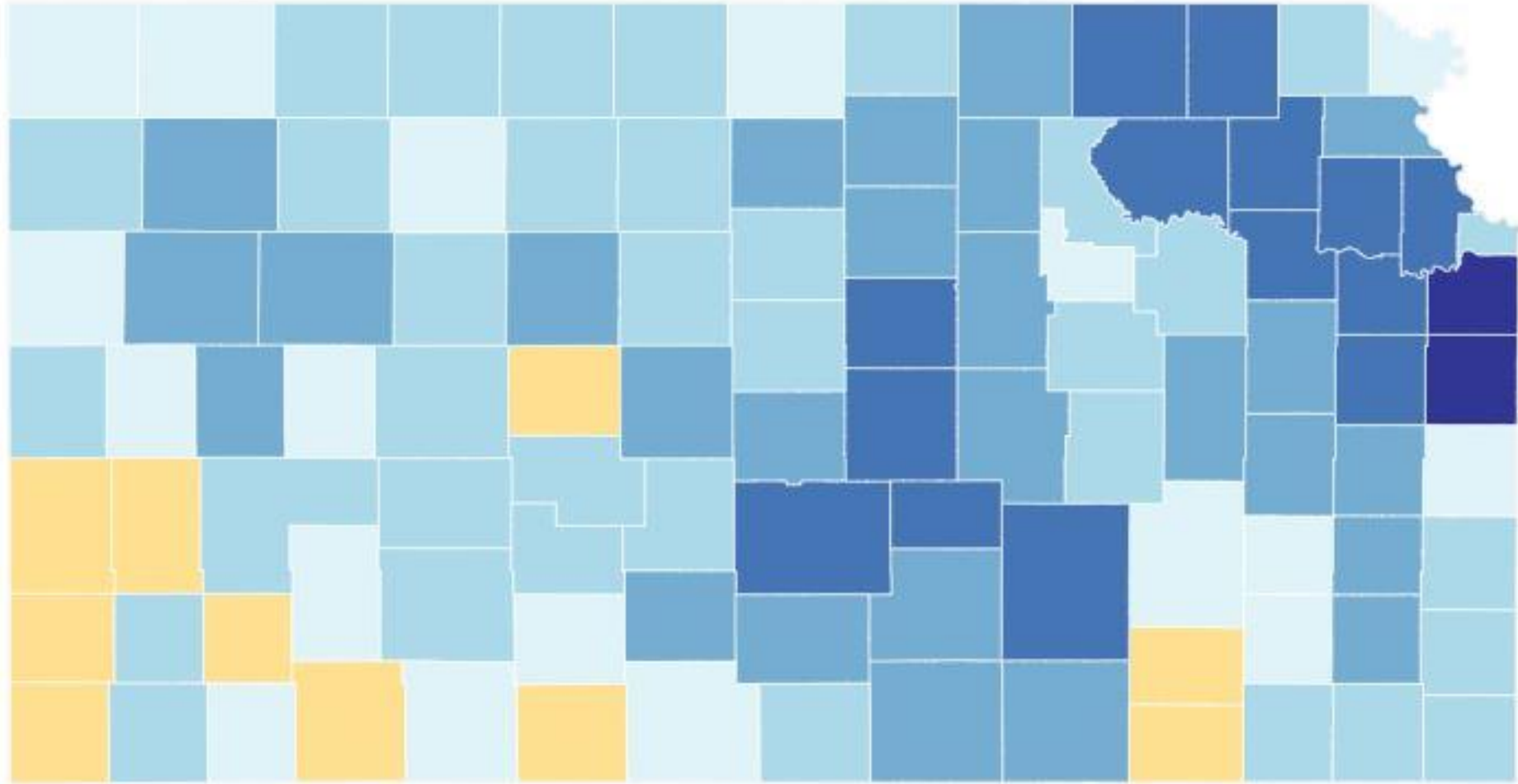
- SPARK Task Force identified need for broadband in these areas:
 - Increasing access to telehealth and telemedicine
 - Increasing broadband access for rural and underserved areas
 - Increasing access for continuous, distanced learning
 - Affordable, quality broadband for every Kansan
- SPARK Task Force & State Finance Council approve \$60 million for Connectivity.
 - Funding approved in time for Economic Development and Connectivity portal to open on August 13th.
 - \$50 million to expand broadband infrastructure throughout the state.
 - \$10 million to ensure remote health, ed, & work access for low-income Kansans.
- Local Communities could also invest \$400 million in Round 1 funding in Connectivity.

LISTENING → ACTION

Looking Forward

- Working Together Toward Solutions
- Impacts of COVID-19 on Priorities
- 2020 Census
- 2021 and Beyond

LISTENING → ACTION



Self-Response Rate (%)



LISTENING → ACTION



LISTENING → ACTION

Thank You

- Survey: Anything else you want the Office of Rural Prosperity or Lt. Governor to know about your community?
- Our Tomorrow's Story Bank
- 2019 ORP Report



RuralKanProsper.KS.gov



LtGovRogers



@LtGovRogers #ORPTour2020 #KansasORP